

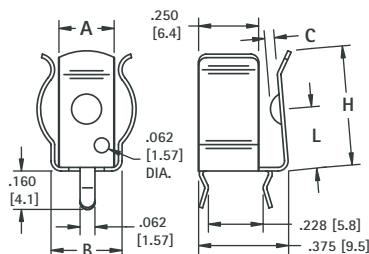


- Available for "A" · "AA" · "AAA" · "AAAA" · "N" size batteries
- Mounts securely to the PC board with advanced "Snap-In" design for thru hole mounting
- "Snap-In" clip holds firmly for wave soldering
- Reliable spring tension assures low contact resistance
- Low profile, economical design
- Retains battery securely to withstand shock and vibration

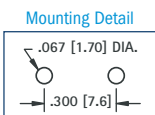
No Ears



For "A" · "AA" · "AAA" · "N"



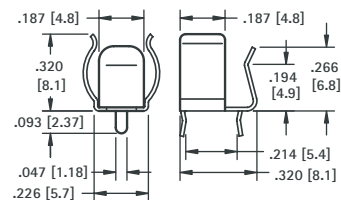
Refer to page 25 for Battery Contact Layout & Mounting Details



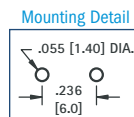
MATERIAL:
Spring Steel Tin Nickel Plate



For "AAAA"



MATERIAL: .010 (.25) thick Spring Steel, Tin Nickel Plate



CAT. NO.	A	B	C	H	L	MATERIAL THICKNESS	BATTERY DIAMETER	BATTERY SIZE
52	.250 (6.4)	-	.032 (0.8)	.500 (12.7)	.280 (7.1)	.010 (.25)	No Ears	"A" · "AA"
92	.312 (7.9)	.375 (9.5)	.056 (1.4)	.593 (15.1)	.359 (9.1)	.012 (.30)	531-.665 (13.5-16.9)	
2915	.312 (7.9)	.375 (9.5)	.050 (1.3)	.593 (15.1)	.359 (9.1)	.015 (.39)		"AAA" · "N"
82	.250 (6.4)	.300 (7.6)	.040 (1.0)	.500 (12.7)	.280 (7.1)	.010 (.25)		"AAAA"
51	See drawing for Cat. No. 51							

CAT. NO. 51

SURFACE MOUNT BATTERY CLIPS

AVAILABLE ON TAPE AND REEL

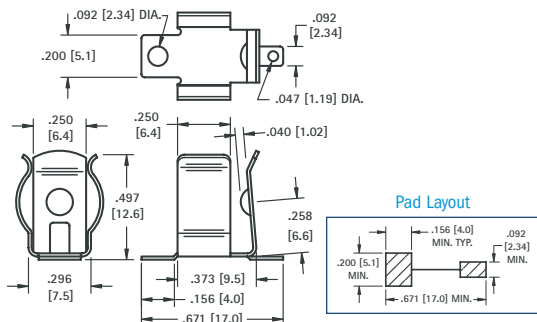
- Low profile for densely packed PCBs
- "Flow-Hole" SMT solder tail design for increased joint strength
- Retains cell securely, withstands shock and vibration
- All conductive polystyrene carrier tape meets ANSI/EIA -481 standard

MATERIAL: .010 (.25) thick Spring Steel, Tin Nickel Plate

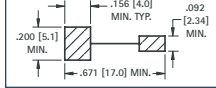
Refer to page 25 for Battery Contact Layout & Mounting Details



For "AAA" · "N"



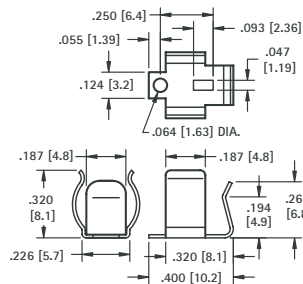
Pad Layout



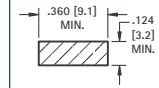
CAT. NO. 55 (Bulk) CAT. NO. 55TR (Tape & Reel)

Tape & Reel Spec's: 32mm wide; 16mm pitch; 13 inch reel, (300 pieces per reel)

For "AAAA"



Pad Layout



CAT. NO. 50 (Bulk) CAT. NO. 50TR (Tape & Reel)

Tape & Reel Spec's: 24mm wide; 16mm pitch; 13 inch reel, (500 pieces per reel)

ECONOMY CONTACTS

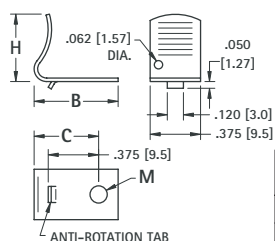
For "AA" · "C" · "D"

- Designed for mounting in self-contained, non-metallic battery compartments.
- Reliable spring tension assures low contact resistance.
- Recessed contact holds battery in place.
- All clips have anti-rotation tab.

MATERIAL: .016 (.41) thick Spring Steel, Nickel Plate



FIG. 1



CAT. NO.	FIG. NO.	B	C	H	M MTG. HOLE	CELL SIZE
206	1	.625 (15.9)	.480 (12.2)	.500 (12.7)	.128 (3.3)	"AA"
207	2	.687 (17.4)	.547 (13.9)	.875 (22.2)	.128 (3.3)	"C"
208	2	.750 (19.1)	.562 (14.3)	1.260 (32.0)	.128 (3.3)	"D"

Refer to page 25 for Battery Contact Layout & Mounting Details

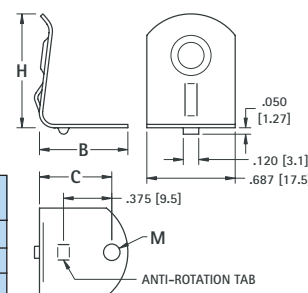


FIG. 2